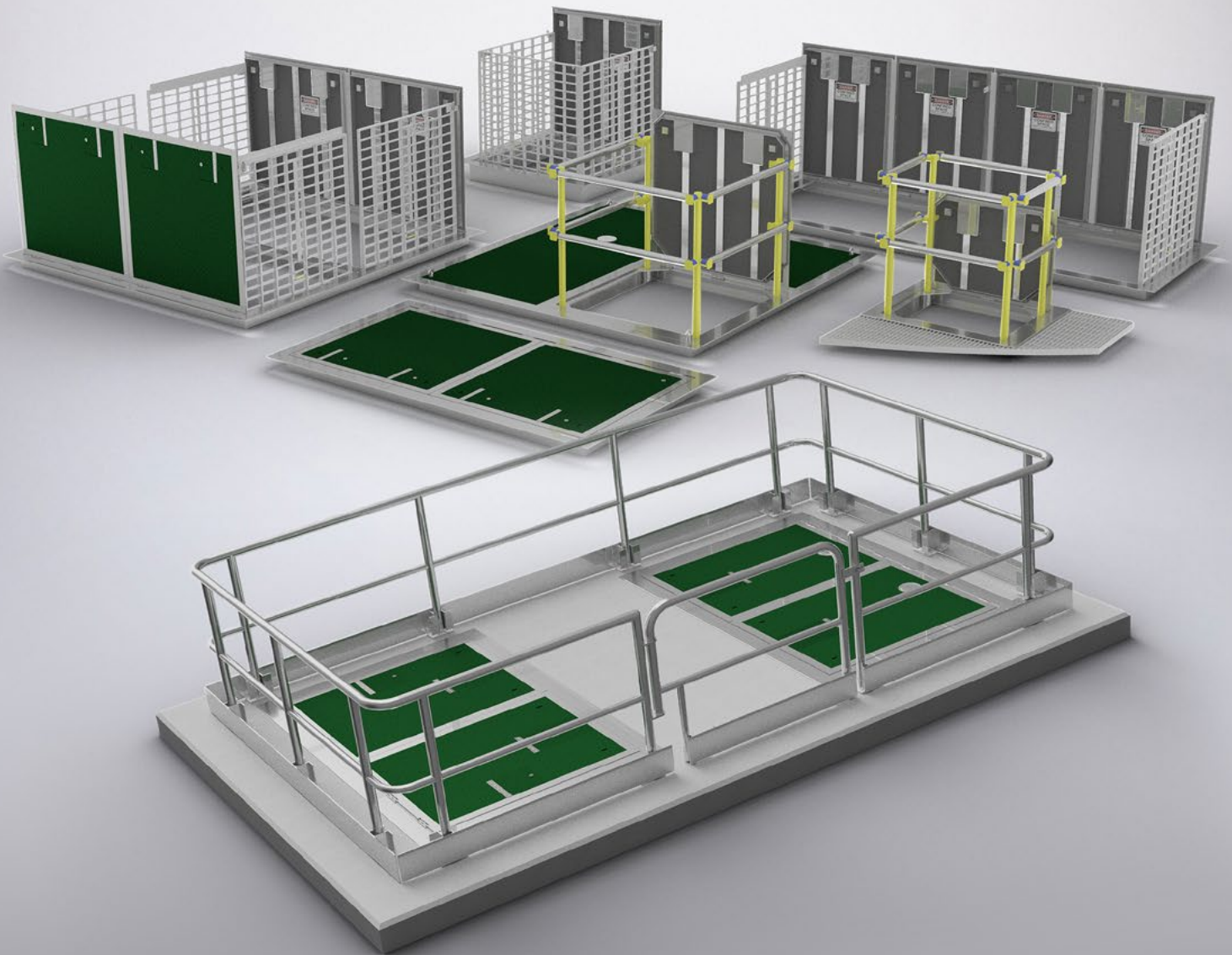


ACCESS COVERS

Why choose a McBerns Access Cover?

- Exclusive McBerns frame extrusion
- Custom made to suit site requirements
- 4 side void protection safety grate system with removable front grate and also swing gate
- Design, fabrication and installation service
- A, B, C & D load rate tested
- Lightweight lift
- Flush mounted or mounted on hob
- Hinged safety grates (removable)
- Safety Rail System
- Australian Made and Owned



McBerns Access Covers

McBerns has been designing and manufacturing Pump Station Safety Access Covers for over 15 years and they just keep improving. Our access cover designs have set new standards in void protection and workers' safety. Now specified throughout major Water & Wastewater Authorities. Also used throughout construction, mining and telecommunications companies.

Our innovative 4-side void protection safety grate designs allow for safe, easy access with an external barrier. Suited for use in new pump station designs or retro-fitted to existing sites. The Safety Access Covers are suited to any situation where fall protection is needed. They are used on pump stations, valve pits, sewerage treatment plants, and water reservoirs.

CONSULTATION • DESIGN • MANUFACTURE

McBerns offers a highly qualified design team skilled with industry knowledge and engineering expertise. With each McBerns Access Cover individually designed and manufactured to suit specific site requirements, McBerns prides itself on working closely with its customers and being involved from the concept design stage to ensure product suitability and total safety.

Our design consulting service involves:

- Consultation with all stake holders at design stage
- Design specifications and drawings for approval
- On site inspections throughout project life
- Manufactured to meet Australian Standards
- Follow-up maintenance service

INNOVATION

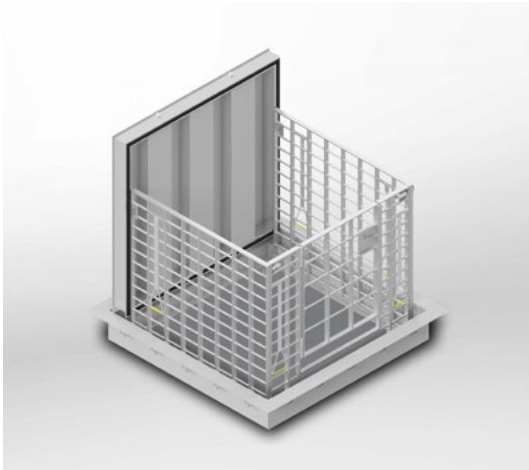
McBerns' innovative designs include an exclusive frame extrusion which ensures McBerns Access Covers are structurally stronger by reducing the number of welds. This results in better sealing and also increases the strength of the cover. The extrusion enables McBerns to manufacture load ratings A, B and D covers for different sites, as well as streamlining production and quality outputs - helping to reduce production costs.



ACCESS COVER TESTING AND ACCREDITATION

All McBerns access cover designs are assessed for manufacturer compliances and any new designs are assessed and tested to meet the following Australian Standards.

- | | |
|-------------------------|---|
| AS 2865:2009 | – Confined spaces, general design considerations |
| Alpha Test | – (NATA accredited) test procedure TP208 |
| AS 1319:1994 | – Safety signs, confined space entry signs |
| AS 3996:2019 | – Access covers and grates. Class A Certification, Class B Certification, Class D Certification. |
| AS/NZS 1665:2004 | – Welding of aluminium structures |
| AS 1657:2018 | – Fixed platforms, walkways, stairways and ladders |
| AS/NZS 1866:1997 | – Aluminium and aluminium alloys |
| AS 4586:2013 | – Slip resistance classification, lid slip resistant coating |
| AS/NZS 1665:2004 | – Cat B – Welding of aluminium structures |
| AS 1391:1994 | – Metallic materials |



Premium Certified Gas & Airtight Safety Access Cover

Part Number:	LFPM
Description:	Aluminium safety access cover - premium, gas & airtight
Application:	Sewage pump stations, manholes, air valves, water pits, electrical pits, certified gas / water tight, class load a-d
Material / Finish:	Gas & air tight aluminium frame, non slip coating, Optional colours
Dimensions:	Custom to suit your site requirements
Weight:	Dependent on lid load rating
General Specifications:	AS3996:2019, AS4586:2013, AS/NZS1665:2007



Premium Certified Gas & Airtight with Safety Rail Option Safety Access Cover

Part Number:	LFPMHR
Description:	Aluminium safety access cover - premium, certified gas / water tight, with safety rail option, class load a,b
Application:	Sewage pump stations, manholes, air valves, water pits, electrical pits
Material / Finish:	Gas & air tight aluminium frame, non slip coating, Optional colours
Dimensions:	Min 600 x 600 or custom to suit your site requirements
Weight:	Each lid lift weight designed < 20 kg
General Specifications:	AS3996:2019, AS4586:2013, AS/NZS1665:2007



4 Side Void Protection Safety Access Cover

Part Number:	LFVP
Description:	Aluminium safety access cover - 4 side void 2 section, available as multiple section
Application:	Sewage pump stations, manholes, air valves, water pits
Material / Finish:	Aluminium frame, non slip coating, optional colours
Dimensions:	1050 x 1050 or custom to suit your site requirements
Weight:	Each lid lift weight designed < 20 kg
General Specifications:	AS3996:2019, AS4586:2013, AS/NZS1665:2007



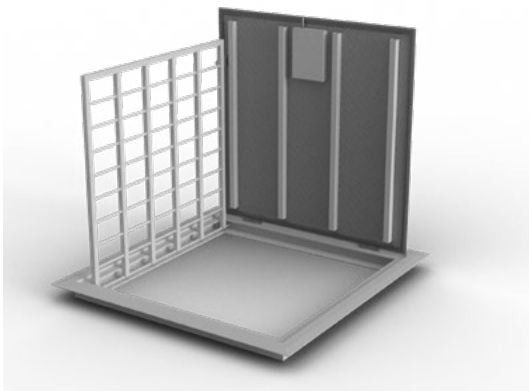
4 Side Void Protection Inclusive of Gate Safety Access Cover

Part Number:	LFVPGATE
Description:	Aluminium safety access cover - lfvp inclusive gate
Application:	Sewage pump stations, manholes, air valves, water pits
Material / Finish:	Aluminium frame, non slip coating, optional colours
Dimensions:	1050 x 1050 or custom to suit your site requirements
Weight:	Each lid lift weight designed < 20 kg
General Specifications:	AS3996:2019, AS4586:2013, AS/NZS1665:2007



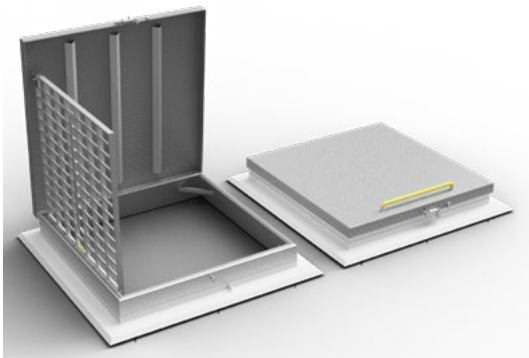
Safety Access Cover Flush Mount

Part Number:	LFM
Description:	Aluminium safety access cover - flush mount 2 section, available as multiple section openings
Application:	Retro fitting, sewage pump stations, manholes, air valves, water pits
Material / Finish:	Aluminium frame, non slip coating, optional colours
Dimensions:	Custom to suit your site requirements
Weight:	Each lid lift weight designed < 20 kg
General Specifications:	AS3996:2019, AS4586:2013, AS/NZS1665:1997



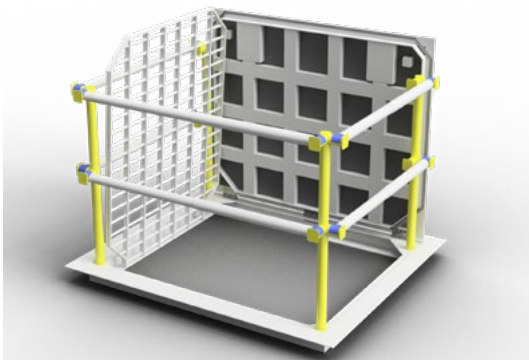
Low Profile Safety Access Cover

Part Number:	LPL
Description:	Aluminium safety access cover - low profile lid, available as multiple section openings
Application:	Used to replace heavy gatic lids, economic alternative, load rating "a" only
Material / Finish:	Aluminium frame, non slip coating, optional colours
Dimensions:	Custom to suit your site requirements
Weight:	Each lid lift weight designed < 20 kg
General Specifications:	AS3996:2019, AS4586:2013, AS/NZS1665:2007



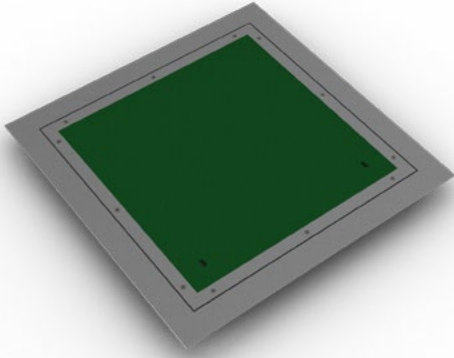
Certified Reservoir Safety Access Cover

Part Number:	LRES
Description:	Approved reservoir lid aluminium safety access cover - flush mount 1 section
Application:	Retro fitting, water pump stations, manholes, air valves, water pits, reservoirs
Material / Finish:	Aluminium frame, non slip coating, optional colours
Dimensions:	1200 x 1200 or Custom to suit your site requirements
Weight:	Each lid lift weight designed < 20 kg
General Specifications:	AS3996:2019, AS4586:2013, AS/NZS1665:2007



Post and Rail Safety Access Cover

Part Number:	LFPR
Description:	Aluminium safety access cover - post & rail, available as multiple section openings
Application:	Sewage pump stations, manholes, air valves, water pits
Material / Finish:	Aluminium frame, non slip coating, optional colours
Dimensions:	Min 600 x 600 or Custom to suit your site requirements
Weight:	Each lid lift weight designed < 20 kg
General Specifications:	AS3996:2019, AS4586:2013, AS/NZS1665:2007



Bolt Down Lid Safety Access Cover

Part Number:	LBOLTDN
Description:	Aluminium safety access cover bolt down water tight
Application:	Designed for water and sewerage, telecommunication and electrical pits
Material / Finish:	Aluminium frame, non slip coating, optional colours
Dimensions:	Custom to suit your site requirements
Weight:	Each lid lift weight designed < 20 kg
General Specifications:	AS3996:2019, AS4586:2013, AS/NZS1665:2007



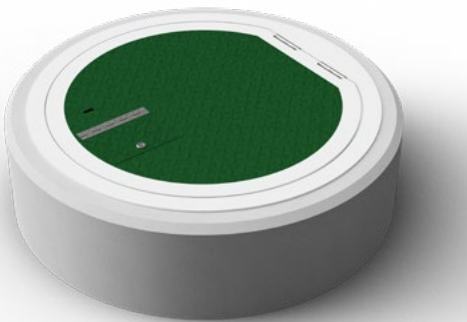
Grated Safety Access Cover

Part Number:	LFGC
Description:	Grated access cover, lightweight and hinged
Application:	Water and sewerage valve pits and walkways
Material / Finish:	Grated finish
Dimensions:	Custom to suit your site requirements
Weight:	Variable
General Specifications:	AS3996:2019, AS4586:2013, AS/NZS1665:2007



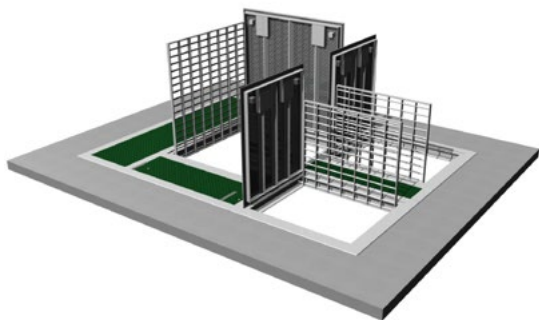
4 Side Void with Telescopic Rail Safety Access Cover

Part Number:	LFVPT
Description:	Aluminium safety access cover - four side void telescopic rail
Application:	Ideally used with smaller opening LFVP to achieve required height
Material / Finish:	Aluminium frame, non slip coating, optional colours
Dimensions:	Min 750 x 750 Clear opening
Weight:	Each lid lift weight designed < 20 kg
General Specifications:	AS3996:2019, AS4586:2013, AS/NZS1665:2007



Custom Round Safety Access Cover

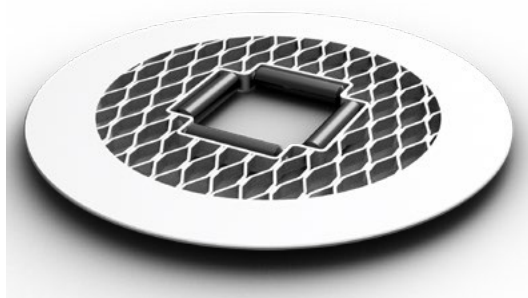
Part Number:	LFMC
Description:	Aluminium Safety Access Cover - round to custom design
Application:	Designed to suit circular opening can be bolt or hinge, Water pits
Material / Finish:	Aluminium frame, non slip coating, optional colours
Dimensions:	Min 900mm Diameter ID
Weight:	Each lid lift weight designed < 20 kg
General Specifications:	AS3996:2019, AS4586:2013, AS/NZS1665:2007



Custom

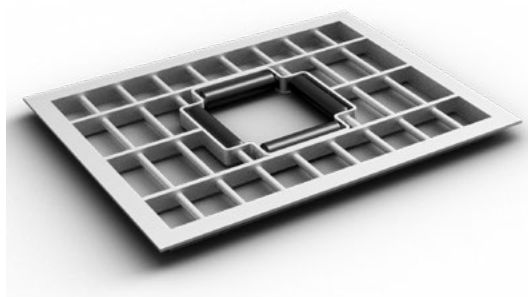
Part Number:	LFM-CUSTOM
Description:	Aluminium Safety Access Cover - Flush Mount Custom, Certified Gas / Water Tight
Application:	Retro Fitting, Sewage Pump Stations, Manholes, Air Valves, Water Pits
Material / Finish:	Aluminium Frame, Non slip coating, Optional colours
Dimensions:	Custom to suit site access requirements
Weight:	Each lid lift weight designed < 20 kg
General Specifications:	AS3996:2019, AS4586:2013, AS/NZS1665:2007

Round Manhole Cover Walk Mesh



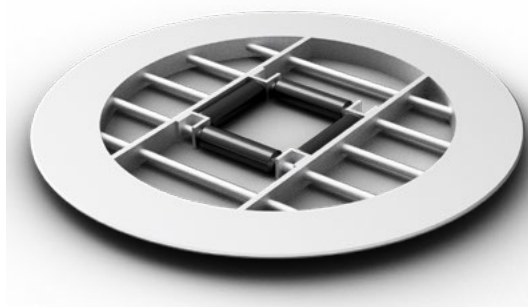
Part Number:	MHCOVROLROUNWM
Description:	Aluminium manhole cover with rollers - Round
Application:	Temporary Protection of open manholes
Material / Finish:	Aluminium Frame
Dimensions:	600mm to 900mm Diameter
Weight:	15kg

Rectangle Manhole Cover

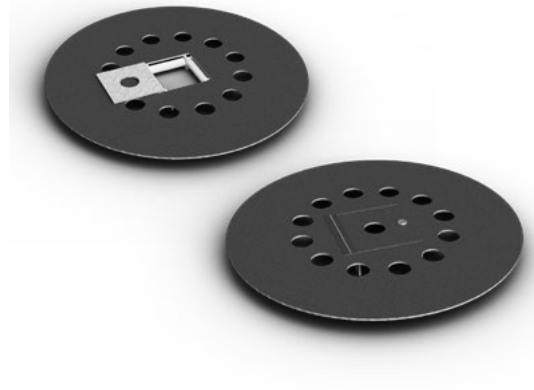


Part Number:	MHCOVROLRECT
Description:	Aluminium manhole cover with rollers - Rectangle
Application:	Temporary Protection of open manholes
Material / Finish:	Aluminium Frame
Dimensions:	900 x 600 or Custom to suit site requirements
Weight:	8 kg

Round Manhole Cover Walk Mesh

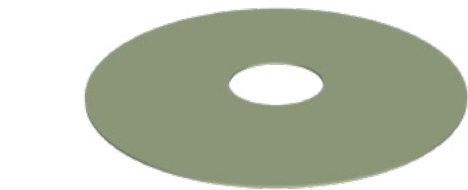


Part Number:	MHCOVERGRATEROUND
Description:	Aluminium manhole cover with rollers - Round
Application:	Temporary Protection of open manholes
Material / Finish:	Aluminium Frame
Dimensions:	600mm to 900mm Diameter
Weight:	15kg



Round Manhole Cover - Lockable

Part Number:	MHCOVROLROUN
Description:	Aluminium manhole cover with rollers Lockable
Application:	Temporary Protection of open manholes
Material / Finish:	Aluminium Frame, Non Slip Coating, Optional colours
Dimensions:	600mm to 900mm Diameter
Weight:	8 kg



Installation of GM over a manhole

Part Number:	GMMANHOLPLATE
Description:	For use with GM300/375 with removal of lid

We can build handrails to your requirement



Part Number:	HR CUSTOM
Description:	Taking the infrastructure into account we can design to specific requirements, all gates are self closing and lockable



MCBERNS

INNOVATIVE SOLUTIONS

ODOUR MANAGEMENT
SAFETY ACCESS COVERS
DESIGN & FABRICATION
DATA ANALYTICS

MCBERNS PTY LTD
ABN: 56 060 984 107
Address: 11 Tectonic Crescent,
Kunda Park, Qld, 4556
Phone: +61 7 5445 1646
Fax: +61 7 5445 1743
Email: mail@mcbarns.com

Noel Southern: 0411 745 458
Paul O'Kane: 0459 396 157
Stuart Darby: 0413 436 683

www.mcbarns.com