

MCBERNS

INNOVATIVE SOLUTIONS

WELL WASHERS



Why choose a McBerns Well Washer?

- Eliminates fat & grease build up on infrastructure & Walls
- No power required
- Operates with mains pressure water
- Uses less than 100 lts water per/day
- Cleaner level sensor probes
- Reduces overflows caused by fogs
- Reduces odour
- Reduces confined space entries
- Reduces infrastructure corrosion
- Reduces maintenance
- Improved safety at pump stations
- Reduces customer complaints
- Healthier environment
- Optional pre-programmed with 5 cleaning cycle durations

McBerns Well Washers

The Well Washer has been in the Australasian marketplace for 25 years and is still the preferred method in keeping pump stations fat free. The AutoWellWasher™ will reduce maintenance in wet wells and tanks that accumulate fats, oils and greases (FOGs). Our design uses town water or recycled treated effluent at mains pressure to keep pump stations clean.

It can be installed using existing telemetry or with our pre-programmed timing device that activates towards the end of the pump out cycle.

Installing a wellwasher will eliminate large fatty build-up in pump stations, this then reduces blockages in pumps

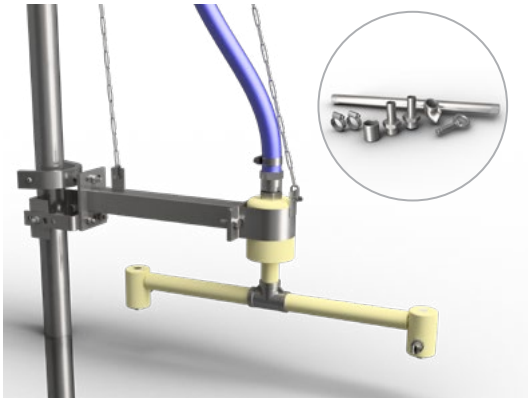
and downstream sewers. The level sensors remain clean so the pumps work more efficiently, reducing the risk of overflows due to FOG build-up. It has also been shown to significantly reduce sulphide corrosion on concrete walls, pumps and other internal infrastructure components. There are fewer confined space entries required, only when essential maintenance tasks are needed.

The Well Washer is wholly designed and manufactured in Australia and has Australian, United States & International Patents.

'The total water usage for a single washer is as little as 100 litres per day.'

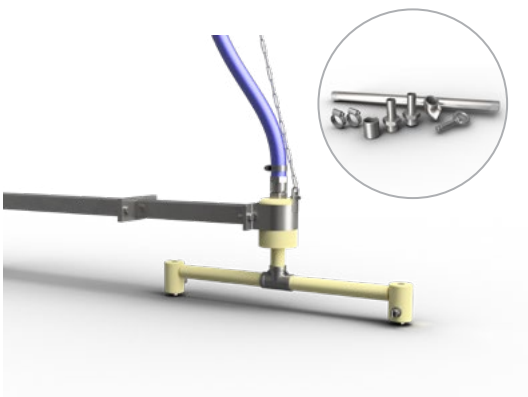
The principle behind the design is simple:
The Well Washer cleans the fat and grease away before it solidifies.





Well Washer Kit Guide Rail Mount

Part Number:	WWKITGRMOUNT
Description:	Kit includes washer, brackets and install hose & fittings
Application:	Eliminates fat & grease build up on infrastructure and walls
Material / Finish:	Austlon, 316 S/S
Weight:	6 kg
General Specifications:	40/60 PSI, 30 l/min, 5-6m (Diameter)



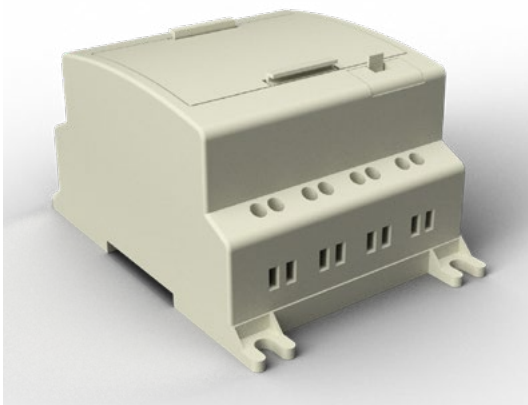
Well Washer Kit Wall Mount

Part Number:	WWKITWALLMOUNT
Description:	Kit includes washer, brackets and install hose & fittings
Application:	Eliminates fat & grease build up on infrastructure and walls
Material / Finish:	Austlon, 316 S/S
Weight:	6 kg
General Specifications:	40/60 PSI, 30 l/min, 5-6m (Diameter)



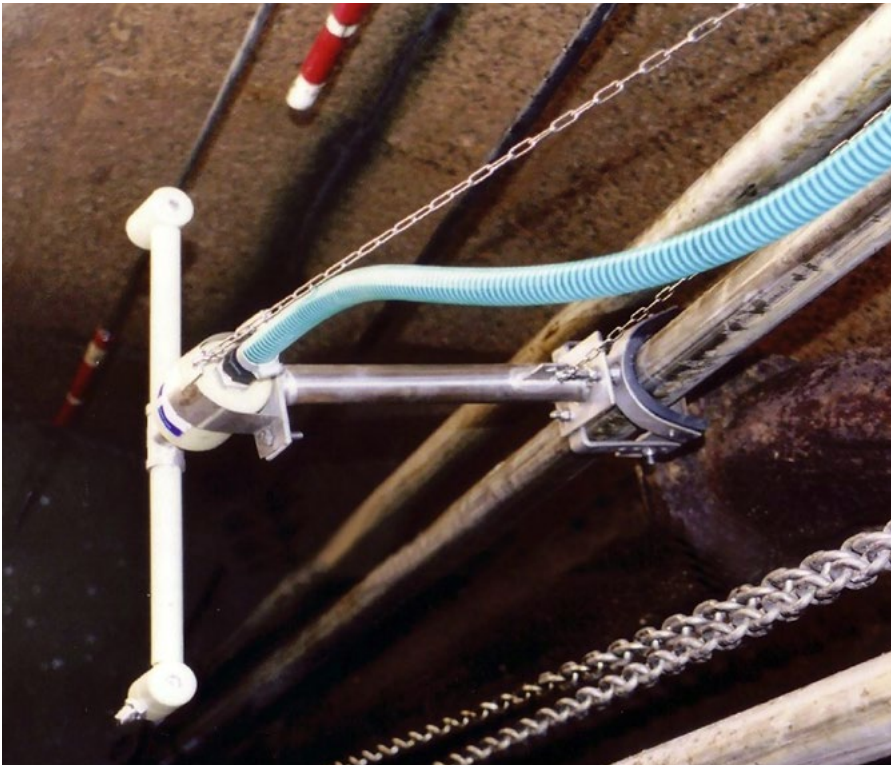
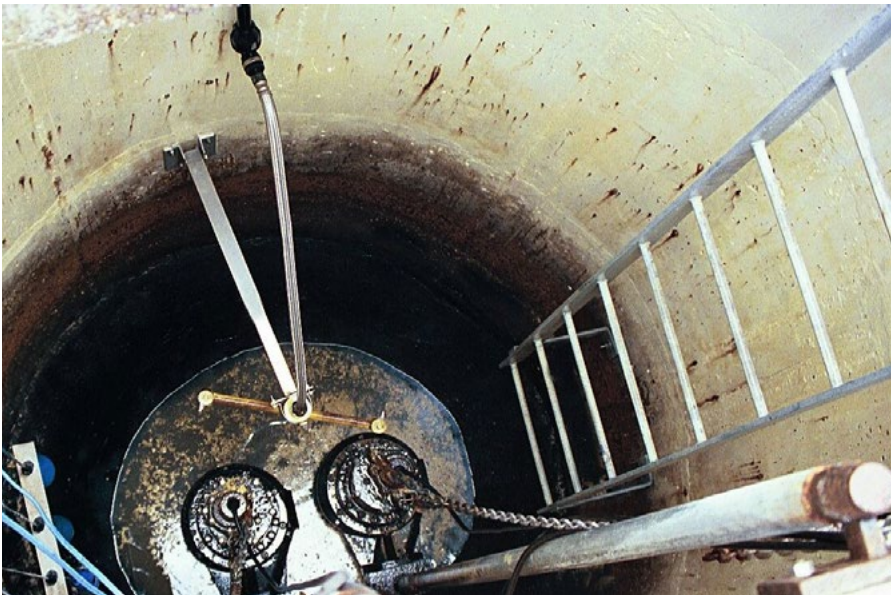
Optional Solenoid Valve

Part Number:	WWSOLENROID
Description:	Optional Solenoid Valves for water supply
Application:	Once energised allows water to flow to wellwasher
Material / Finish:	Brass
Weight:	500 g
General Specifications:	Continuous operation 100% ED c/w LED connector plug IP65



Optional Pre-Programmed Allen-Bradley Micro810 Smart Relay

Part Number:	WWTIMER
Description:	Pre programmed with 5 cleaning cycle durations
Application:	Water Conservation, Minimise manual control
Material / Finish:	PVC
Dimensions:	600mm to 900mm Diameter
Weight:	500 g
General Specifications:	Less than 100 L daily



MCBERNS

INNOVATIVE SOLUTIONS

ODOUR MANAGEMENT
SAFETY ACCESS COVERS
DESIGN & FABRICATION
DATA ANALYTICS

MCBERNS PTY LTD
ABN: 56 060 984 107
Address: 11 Tectonic Crescent,
Kunda Park, Qld, 4556
Phone: +61 7 5445 1646
Fax: +61 7 5445 1743
Email: mail@mcbarns.com

Noel Southern: 0411 745 458
Paul O'Kane: 0459 396 157
Stuart Darby: 0413 436 683

www.mcbarns.com